

This talk is NOT about Memorial Trees

Memorial Trees in Sheffield



Memorial Trees in Sheffield



Memorial Trees in Sheffield



Memorial Trees in Sheffield



Memorial Trees in Sheffield



How to save a tree | Comment sauver un arbre

How to save a tree | Comment sauver un arbre



How to save a tree | Comment sauver un arbre



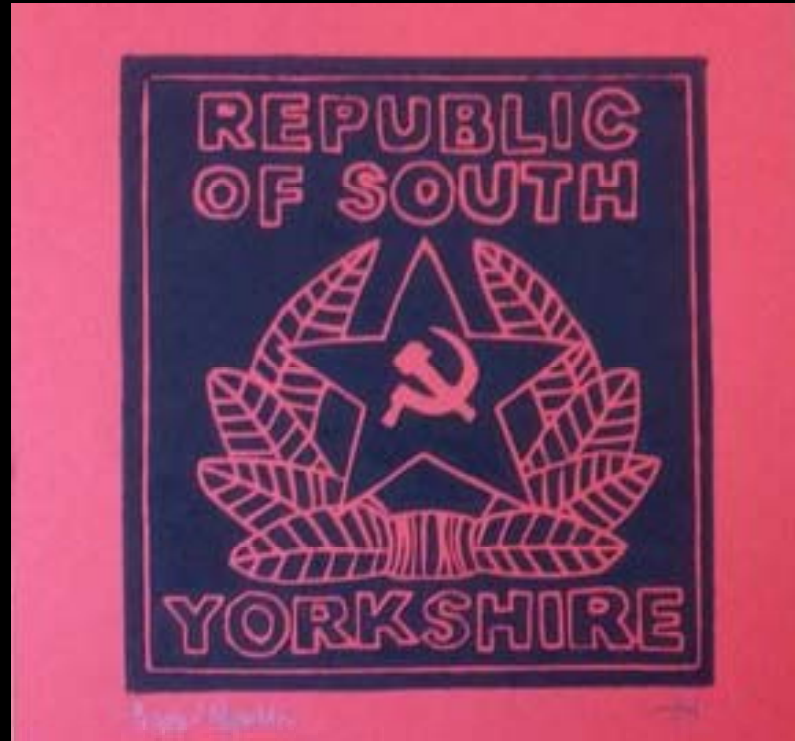
Sheffield



South
Yorkshire

**‘The People’s Republic
of South Yorkshire’**

**‘La République Populaire
du Yorkshire du Sud’**



City of trespassers | ?

City of trespassers | ?



1932

City of trespassers | ?



1932

Sheffield Town Hall

Hotel de Ville



1932

City of Dispute | Ville de Contestation

City of Dispute

Ville de Contestation



Orgreave 1984

Picket talking to police, Orgreave, 6th June 1984. Photography © Martin Jenkinson www.pastpixels.co.uk

City of Dispute

Ville de Contestation



1984 Battle of Orgreave

City of Dispute

Ville de Contestation

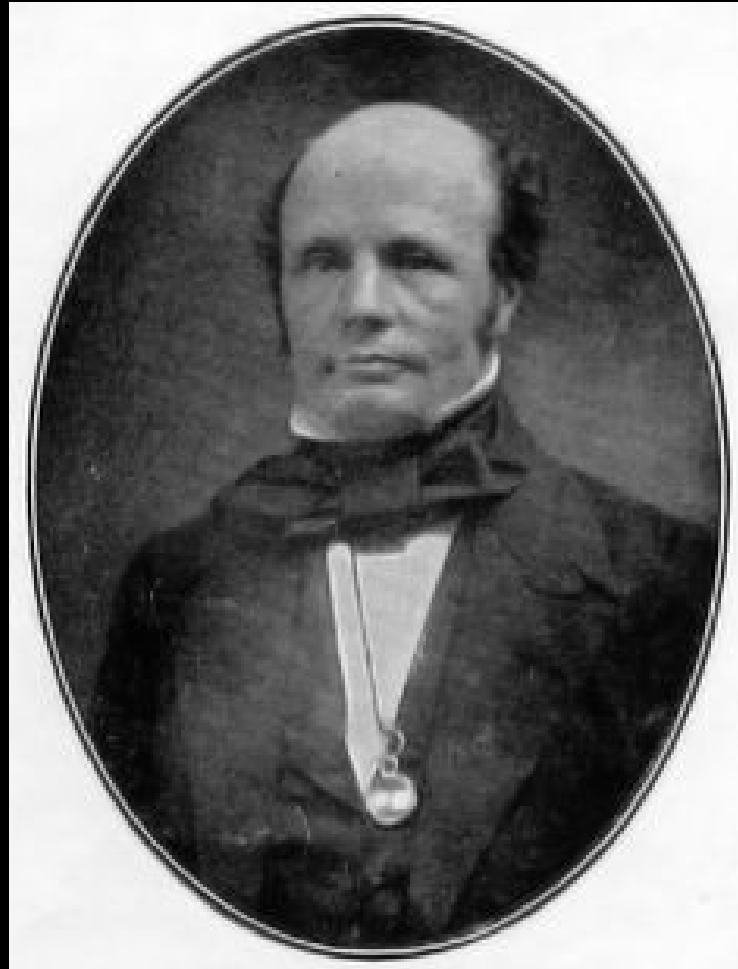


2018 Lord Mayor of Sheffield

City of Trees | Ville Des arbres



George Wostenholme



George Wostenholme



PREV

George Wostenholme



Boston USA

George Wostenholme



George Wostenholme



Memorial Trees



Pothole City?

Pothole City?



Pothole City?



Pothole City?



Pothole
City

+£2Bn

Pothole City?

Pothole
City

+£2Bn

=

Tree
Disaster



The Sheffield System



Ealing, London
OK ✓



Sheffield ✗
CHOP



St Albans
OK ✓



St Albans
OK ✓

How to save a tree | Comment sauver un arbre



How to save a tree | Comment sauver un arbre

Petition

Sheffield Council Please don't
chop down our Trees

Fred, Smith Street, Sheffield

Sally, Brown Street, Sheffield

Jessie, Steel Rd, Sheffield

Jim, Montgomery Avenue, Sheffield

Rebecca, Freda Street, Sheffield

Patrick, Steel Rd, Sheffield

**20,000
Signatures**

How to save a tree | Comment sauver un arbre

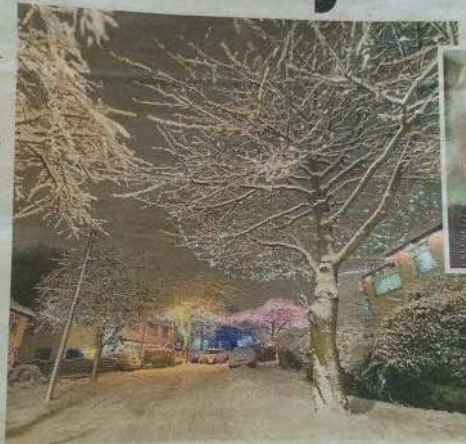
Media

Daily Mail, Friday, December 15, 2017

Page 63

Don't axe Twinkle Street's lovely trees

I AM appalled that Sheffield has proposed felling trees planted in memory of World War I soldiers (Mail). The city where I live has lost more than 5,500 beautiful mature roadside trees in a frenzied felling programme. If that is not bad enough, this week contractors appeared with chainsaws saying the cherry trees decorated with fairy lights in Abbeydale Park Rise, which raise money for a hospice, must be felled before Christmas. Families come from miles around to see 'Twinkle Street'. Children have been reduced to tears by this heartless official action. Campaigners have never objected to dangerous, diseased or dying trees being removed, but most of those felled have been healthy specimens causing minor problems such as uneven paving. Simple solutions have been ignored as it appears it is more profitable to fell as many trees as possible in order to hit a target of 6,000 by New Year's Eve. The council set up an independent panel, which declared many trees could be saved, but its findings were ignored. Arboricultural experts have said most of the trees are healthy and there is no need for felling, but this was also ignored. It appears nothing can be done to stop this shameful vandalism. Residents have been roused before dawn and told to move their cars so fellings can take place. Two ladies in their 70s were arrested for standing in front of a tree in an effort to stop it being felled. Sheffield City Council has taken out



Before the chop: The festive lights in Abbeydale Park Rise, Sheffield. Above: Susan Richardson

injunctions against some of these peaceful protesters. The 120-year-old Huntingdon Elm — one of only four in the city to survive Dutch elm disease — will go. The 150-year-old Vernon oak is facing being cut down because just one kerbstone has been pushed out of alignment. The proposed desecration of the World War I memorial trees has been opposed by 98 per cent of locals. The council seems to think planting 300

replacements in parks is acceptable, but the memorial trees are irreplaceable because they embody the spirit of the soldiers who gave their lives for their country. Their relatives have seen the trees flourish and grow. This is one of the most destructive episodes in the city's history and is causing so much distress.

SUSAN RICHARDSON,
Sheffield.

WHAT is the Duke of Cambridge saying to Prince Harry as they meet Star Wars droid BB-8 on the red carpet at the film premiere? Our weekly picture feature offers you the chance to write an amusing caption. Staple, glue or tape it to a postcard and send to: Caption Contest (904), Daily Mail, 2 Derry Street, London W8 5TT, to arrive by Thursday, December 21. The best will win a £20 book token.



Picture: GETTY IMAGES

THIS week's winner is Paul Clark of Bude, Cornwall, who has the Duchess of Cornwall thinking as she poses with Trump lookalikes:



I'd rather have a royal flush than three no trumps

Picture: GETTY IMAGES

FOR permission to copy cuttings for internal management and information purposes, please contact the Newspaper Licensing Agency (NLA), PO Box 101, Tunbridge Wells TN1 1WX. Tel: 01892 525273, e-mail: copy@nla.co.uk

Mail Shop.co.uk

Cracking Christmas Offers

HALF

husband brought with THE rolling pin I inherited pin belonged to my grand-

How to save a tree | Comment sauver un arbre

Public Debate



How to save a tree | Comment sauver un arbre



Demonstration



How to save a tree | Comment sauver un arbre



How to save a tree | Comment sauver un arbre



Standing under trees



Standing under trees



Standing under trees



Get arrested by police



Stand in front of trucks



Expect more trouble



working
with



IF YOU DISOBEY THIS ORDER YOU WILL BE GUILTY OF CONTEMPT OF COURT AND MAY BE SENT TO PRISON OR YOUR ASSETS SEIZED.

You must not, from 23:59 hours on 22 August 2017 until 23:59 hours on 25 July 2018:

- (i) Enter any safety zone erected around any tree and/or,
- (ii) Seek to prevent the erection of any safety zone; and/or
- (iii) Remain in any safety zone after it is erected; and/or
- (iv) Knowingly leave any vehicle in any safety zone or intentionally place a vehicle in a position so as to prevent the erection of a safety zone; and/or
- (v) Encourage, aid, counsel, direct or facilitate anybody else to any of the matters in paragraphs (i) to (iv) above including by posting social media messages within the area shown edged red on the plan attached to this Order (being, for the avoidance of doubt, the administrative area of the City of Sheffield).

PENAL NOTICE

IF YOU DISOBEY THIS ORDER YOU WILL BE GUILTY OF CONTEMPT OF COURT AND MAY BE SENT TO PRISON OR FINED OR YOUR ASSETS SEIZED.

Expect Force



LUIS ARROYO PHOTOGRAPHY

Disguise



Show Solidarity



Show Determination



LUIS ARROYO PHOTOGRAPHY

Show Determination



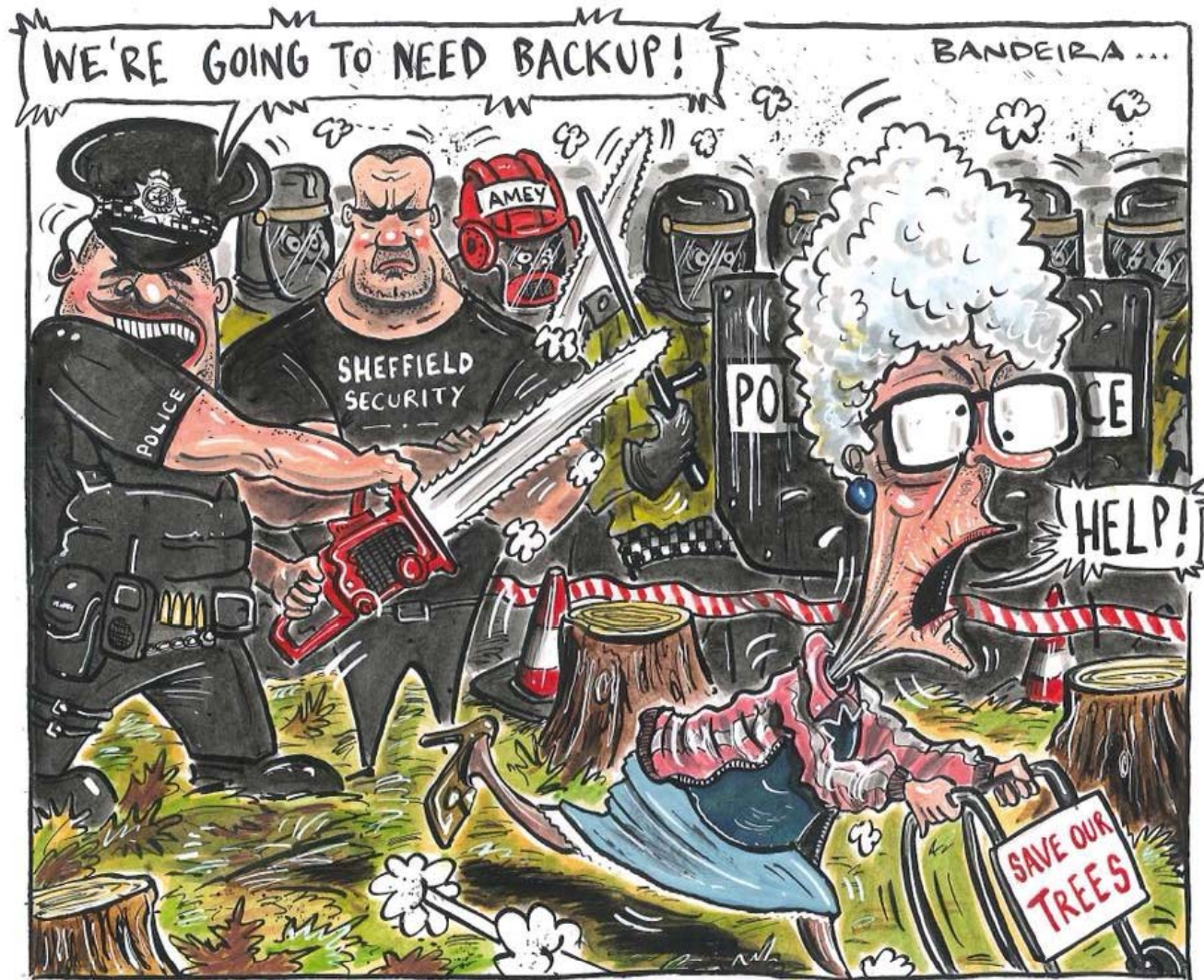
Never stop



Keep Demonstrating



More publicity



THE YORKSHIRE POST

More Force



More Force



30 Police + 20 Security to chop 1 Tree

More Solidarity



More Force

walayfamily.com



More Solidarity



LUIS ARROYO PHOTOGRAPHY

More Solidarity



More Solidarity



Crazy
French
Guy

No More Money



Sheffield council pauses tree-felling scheme after criticism

Council's £2bn project to cut down thousands of dead, dying or dangerous trees put on hold



Celebration



How to save a tree

